



Buyer's Guide: Comparing Patient Engagement Technology





Delivering an exceptional patient experience is more than a nice-to-have—it's a must in healthcare today.

Amid the rise of healthcare consumerism—not to mention emerging technologies and compliance requirements—practices and providers are continually looking for ways to meet patients' dynamic, ever-evolving expectations.

In order to do so, many healthcare practices and electronic health record (EHR) vendors are adapting their technologies to accommodate modern consumers' changing needs. That's where patient engagement technology comes in, helping practices and providers improve the care experience to keep patients happy, healthy, and loyal.

Additionally, EHR vendors are integrating patient engagement technology to enhance their offerings, giving said practices and providers the tools they need to succeed without spending countless time, money, and resources developing the solutions themselves.

Not all patient engagement platforms are equally effective or beneficial. Let's compare the different patient engagement technologies on the market today and discuss the key differentiators that set IntelliChart apart.

Vendor Comparison Chart: Patient Engagement Platforms

		Solution Reach	Relatient	Phreesia	Luma Health	Artera	ezAccess
Online scheduling	●	●	●	●	●	●	●
Homegrown engagement suite	●						
Automated appointment reminders	●	●	●	●	●	●	●
Insurance eligibility verification	●		●	●			●
Digital intake and registration	●	●	●	●	●	●	●
Patient portal	●						●
Patient dashboard	●	●	●	●	●	●	●
Telehealth appointments	●	●		●	●	●	●
Broadcast messaging	●		●		●		
Two-way communication	●		●		●		●
Secure online bill pay	●	●	●				●
Patient surveys and reviews	●	●	●	●	●	●	●
Population health management	●			●	●	●	●
Automated, targeted campaigns	●						
Analytics and reporting	●	●		●	●		
Value-based care reporting	●						

What to Look for in a Patient Engagement Partner & Platform

Your patient engagement partner should provide platform features and accompanying services to set your practice (or EHR solution) up for success. IntelliChart offers:



HOMEGROWN SUITE OF ENGAGEMENT SOLUTIONS

Many patient engagement vendors offer solutions obtained during either an acquisition or partnership. This ultimately ends up equating to a platform of disparate, disjointed products that struggle to communicate or work well together, which can lead to friction for both practices and patients.

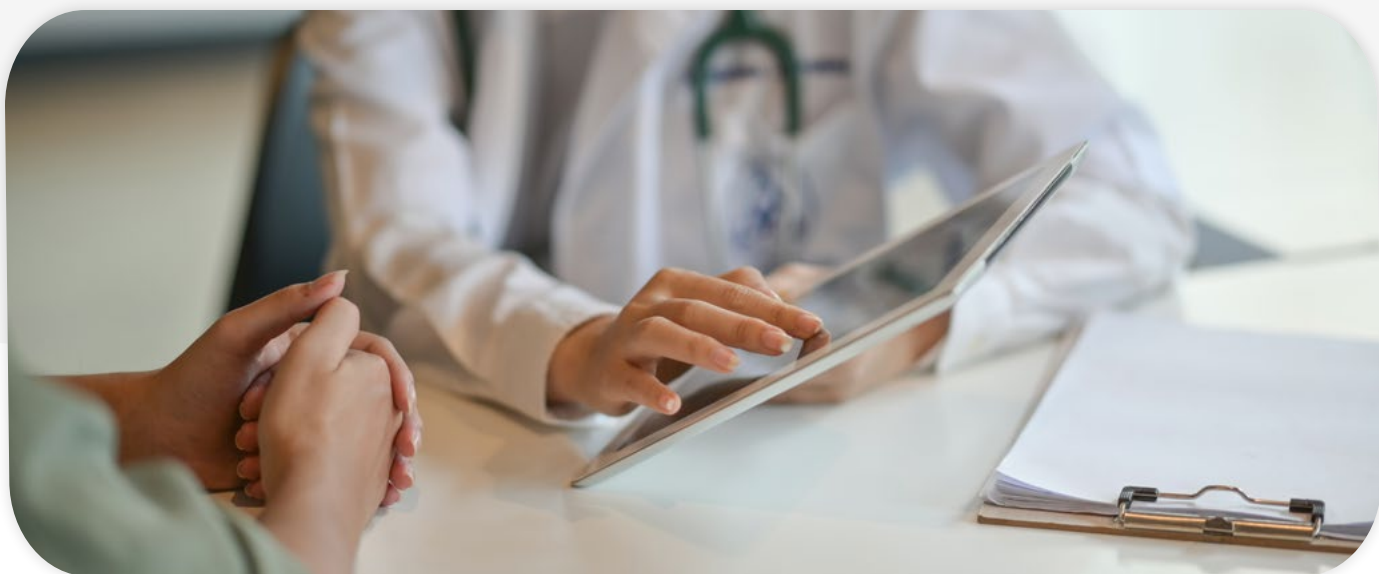
That's not our style at IntelliChart. We've built our engagement solutions from the ground up, leveraging industry and technological expertise to deploy a unified suite of tools that were intentionally designed to work together seamlessly. Having this common foundation allows for greater efficiency and functionality, improving the patient experience and simplifying provider workflows.



AN EASY, MODERN USER EXPERIENCE (UX)

UX plays a very important role in software adoption. Even the most comprehensive solution will not be useful or beneficial if a user can't find what they need or figure out how to access certain features. Unfortunately, many of the patient engagement solutions on the market have clunky, outdated user interfaces (UI) and poor UX.

We've designed our platform with exactly this in mind. IntelliChart's solutions are clean, modern, and easy to use. In fact, we get compliments from users all the time on our user-friendly interface and experience. (And if you need technical support or additional training, we're **always** available—but more on that soon!)



SIMPLE CONFIGURATION AND IMPLEMENTATION

Getting started with IntelliChart is simple: Our experienced implementation team provides top-notch support for practices, providers, and vendor partners every step of the way, working with customers to assess pain points and develop workflows. With our support, implementation typically takes 6-8 weeks, depending on your chosen approach and the size of your organization.

Transitioning from another patient portal solution? We'll migrate historical data, route inbox messaging, and automatically enroll new patients. In fact, we provide a portal tool kit that's full of best practices to streamline the entire migration process, including a gap analysis, sample surveys, tips for increasing staff adoption, and even scripts on how to engage patients based on your role.

Our experienced implementation team provides top-notch support for practices, providers, and vendor partners every step of the way.





SEAMLESS INTEGRATION WITH LEADING EHR AND PMS SOLUTIONS

Integrating with our Healthy Outcomes solution allows you to gain access to one, some, or all of our leading patient engagement solutions. In other words, with just a single application programming interface (API) integration, you can utilize numerous solutions, including Patient Portal, Family Portal, Patient Schedule, Patient Intake, Patient Notify, Patient Survey, Patient eHealth, and Patient Activate.

We'll help deploy a single, painless integration that's fully functional from day one—meaning you can eliminate and consolidate other integrations to work with one dedicated patient engagement vendor. Plus, IntelliChart maintains a complete integration, with no additional technical requirements necessary to connect to your EHR and practice management system (PMS).



EXCEPTIONAL CUSTOMER TRAINING AND SUPPORT

We'll never just get you set up and then leave you to fend for yourself—and no reputable vendor would. Practice staff can choose to attend either short, live training, or recorded sessions that are tailored to their role. Following the initial implementation stage, our responsive, in-house support team—no, we never outsource!—is available to help if any questions or issues come up.



ONGOING PRODUCT RESEARCH AND DEVELOPMENT

It's not enough to offer a top-quality product and then quit developing it. Our commitment to launching new features as modern healthcare consumers' needs evolve ensures your engagement technology always delivers what patients are looking for. Better yet, we don't believe in guesswork; our upgrades and enhancements are determined after extensive product and industry research. We're experts at what we do.



FULL PLATFORM OF PATIENT ENGAGEMENT SOLUTIONS

Working with multiple technology vendors increases practice staff workloads and contributes to burnout. The ability to work with a single vendor—such as IntelliChart—that offers patient engagement across each touch point in the healthcare journey can help to reduce workloads, minimize burnout, and deliver a full platform of solutions to accommodate evolving patient and consumer needs.

Achieve Healthy Outcomes with InteliChart

Choosing the right patient engagement platform from the right vendor partner will help you offer a better healthcare experience that sets your practice—or your EHR solution—apart from the rest.

Schedule a demo to see InteliChart's Healthy Outcomes platform in action.

SCHEDULE A DEMO TODAY



INTELICHART

www.intelichart.com